

Smart Elevator Tech, LLC

phone: (415) 819-5744
 email: sales@smartelevatortech.com
 web: www.smartelevatortech.com

Powered Retracta Ladder™

Order Confirmation

Please complete a form for each different configuration

Date: _____ PO#: _____ Qty.: _____

Company: _____

Contact: _____

#1 Control & Wiring (check one):

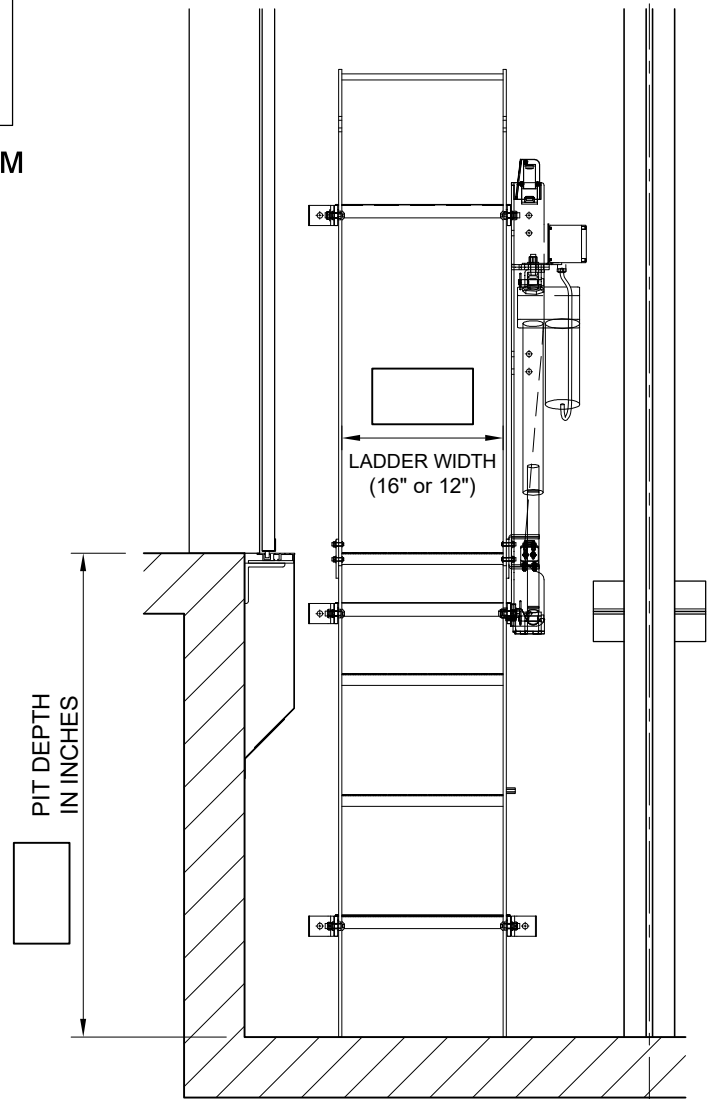
- Option A: Ladder operated by elevator controller, via hoistway access key switch. Requires additional controller circuitry, with contacts brought to ladder.
- Option B: Ladder operated by Ladder Access Station #PRL-LKS4 (included with ladder), located within the hoistway.
- Option B Interlocked: Ladder Access Station located in lobby, includes an EECO #MV-4CN hatch switch, ladder movement restricted by car placement.

#2 Alt. Retractable Ladder Safety Switch

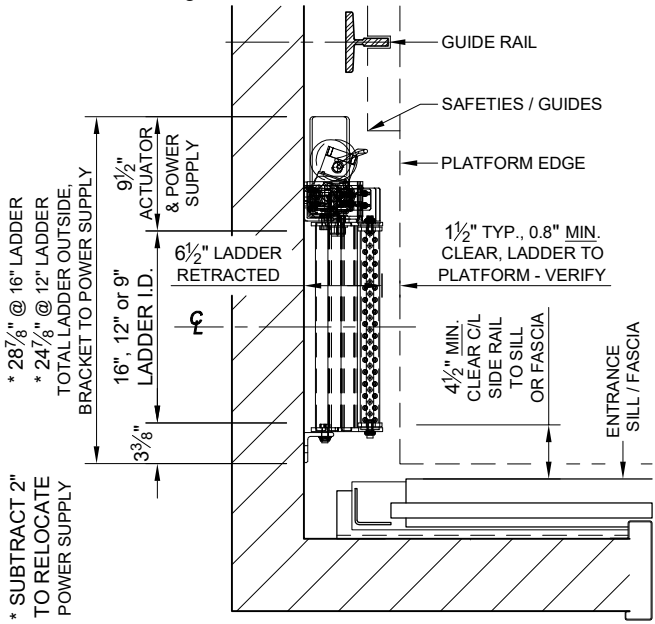
Default switch has (1) N.C. & (1) N.O. contact. Alternate switch has (2) N.C. contacts. Check box if Alt. switch desired - not available for Option A control.

#3 Pit Depth

Fill in dimension box (in inches) on detail to the right.



L.H. Orientation Shown



* 28 7/8" @ 16" LADDER
 * 24 7/8" @ 12" LADDER
 TOTAL LADDER OUTSIDE, BRACKET TO POWER SUPPLY

* SUBTRACT 2" TO RELOCATE POWER SUPPLY

#4 Ladder Width

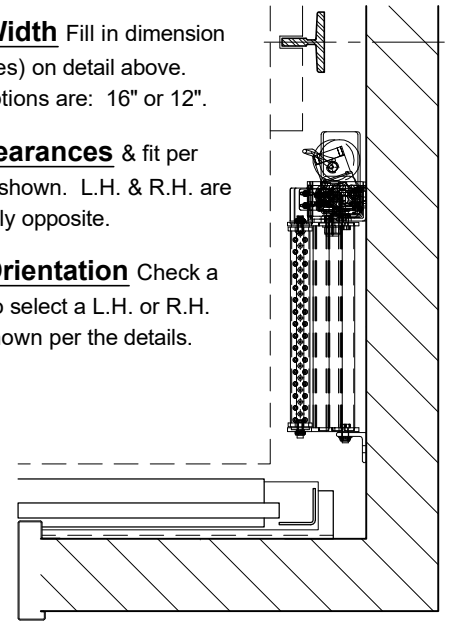
Fill in dimension box (in inches) on detail above. Standard options are: 16" or 12".

#5 Verify Clearances

& fit per dimensions shown. L.H. & R.H. are symmetrically opposite.

#6 Ladder Orientation

Check a box below to select a L.H. or R.H. ladder as shown per the details.



L.H. Powered Retracta Ladder

R.H. Powered Retracta Ladder